

Decision making framework for high tackles

DEFINITION

Shoulder charge: Arm of the shoulder making contact with the ball carrier is behind the tackler's body or tucked in 'sling' position at contact

DEFINITION

High tackle: An illegal tackle causing head contact, where head contact is identified by clear contact to BC head/ neck OR the head visibly moves backwards from the contact point OR the ball carrier requires an HIA

VIDEO SIGNS INDICATING HIGHER DEGREE OF DANGER

Preparation

- Tackler draws the arm back prior to contact
- Tackler may leave the ground
- Arm swings forward prior to contact

Contact

- Tackler is attempting an active/dominant tackle, as opposed to passive/soak, or "pulling out" of contact
- Tackler speed and/or acceleration into tackle is high
- Rigid arm or elbow makes contact with BC head as part of a swinging motion

Follow through

- Tackler completes the tackle (as opposed to immediate release/withdrawal)

SHOULDER CHARGE

Head/neck contact?

1 NO

Degree of danger?

LOW

PENALTY

*See mitigating factors

HIGH

YELLOW

2 YES

RED CARD

*See mitigating factors

HIGH TACKLE

High contact by tackler's...

3 SHOULDER OR HEAD

Degree of danger?

HIGH

RED CARD

*See mitigating factors

LOW

YELLOW

ARM

Head/neck contact?

4 YES

Degree of danger?

HIGH

RED CARD

*See mitigating factors

LOW

YELLOW

5 NO

Above or over
shoulder – seat
belt tackle

PENALTY

*See mitigating factors

Factors to consider against mitigation:

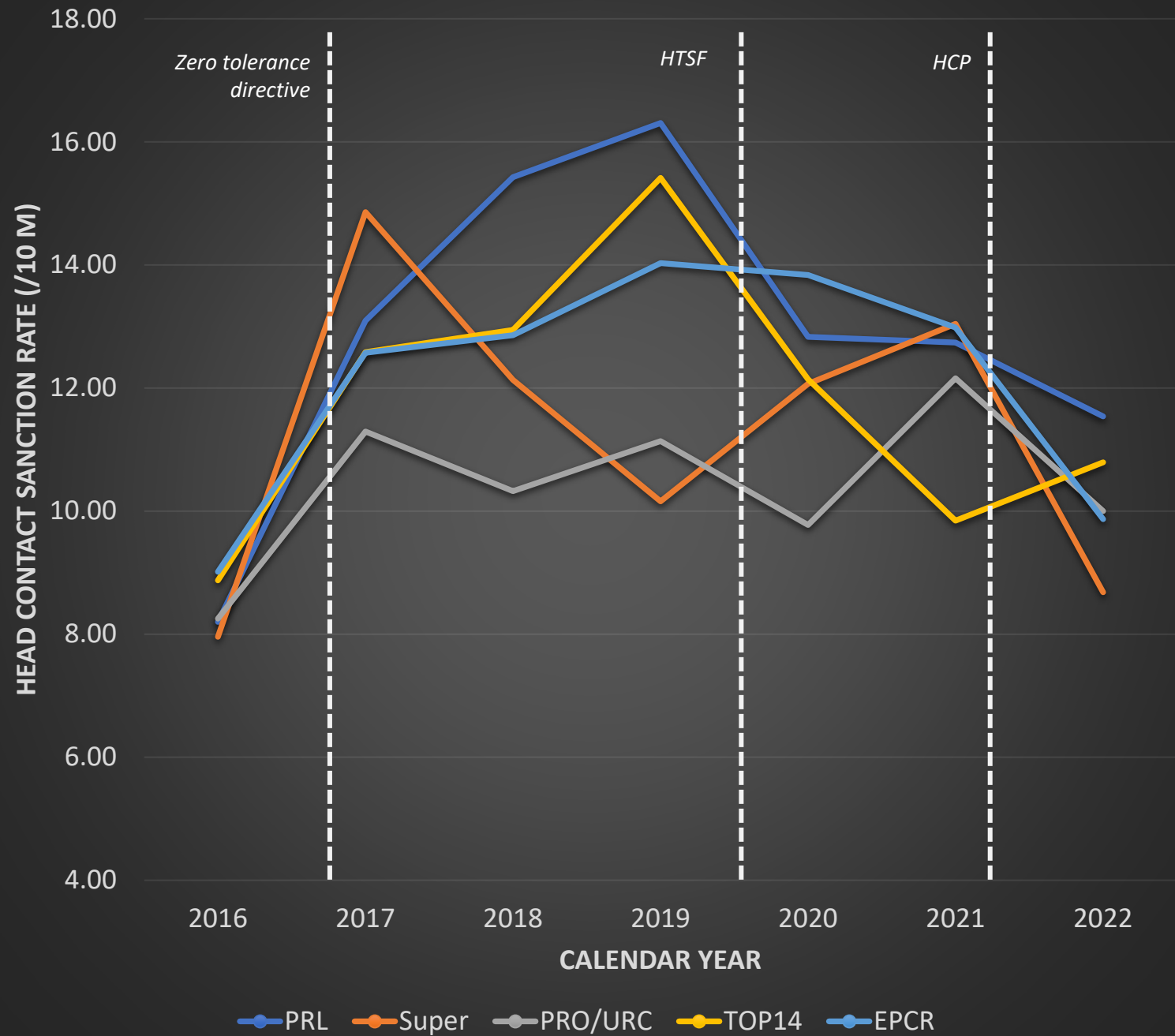
- If the tackler and BC are in open space and the tackler has clear line of sight and/or time before contact

Mitigating factors (must be clear and obvious and can only be applied to reduce a sanction by 1 level)

- Tackler makes a definite attempt to change height in an effort to avoid ball carrier's head
- BC suddenly drops in height (e.g. From earlier tackle, trips/falls, dives to score)
- Tackler is unsighted prior to contact
- "Reactionary" tackle, immediate release
- Head contact is indirect (starts elsewhere on the body and then slips or moves up resulting in minor contact to the BC's head or neck)



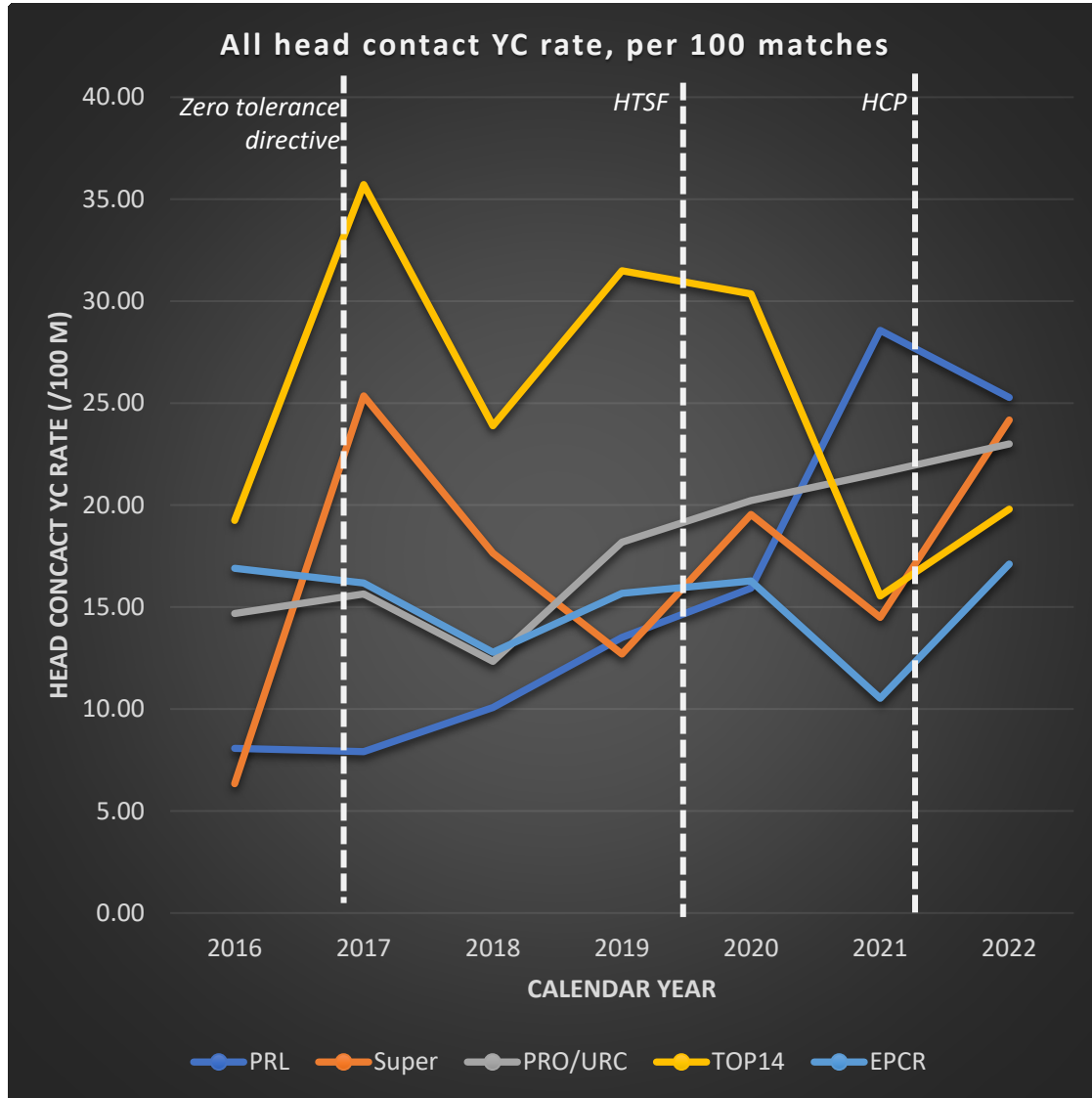
All head contact sanction rate, per 10 matches



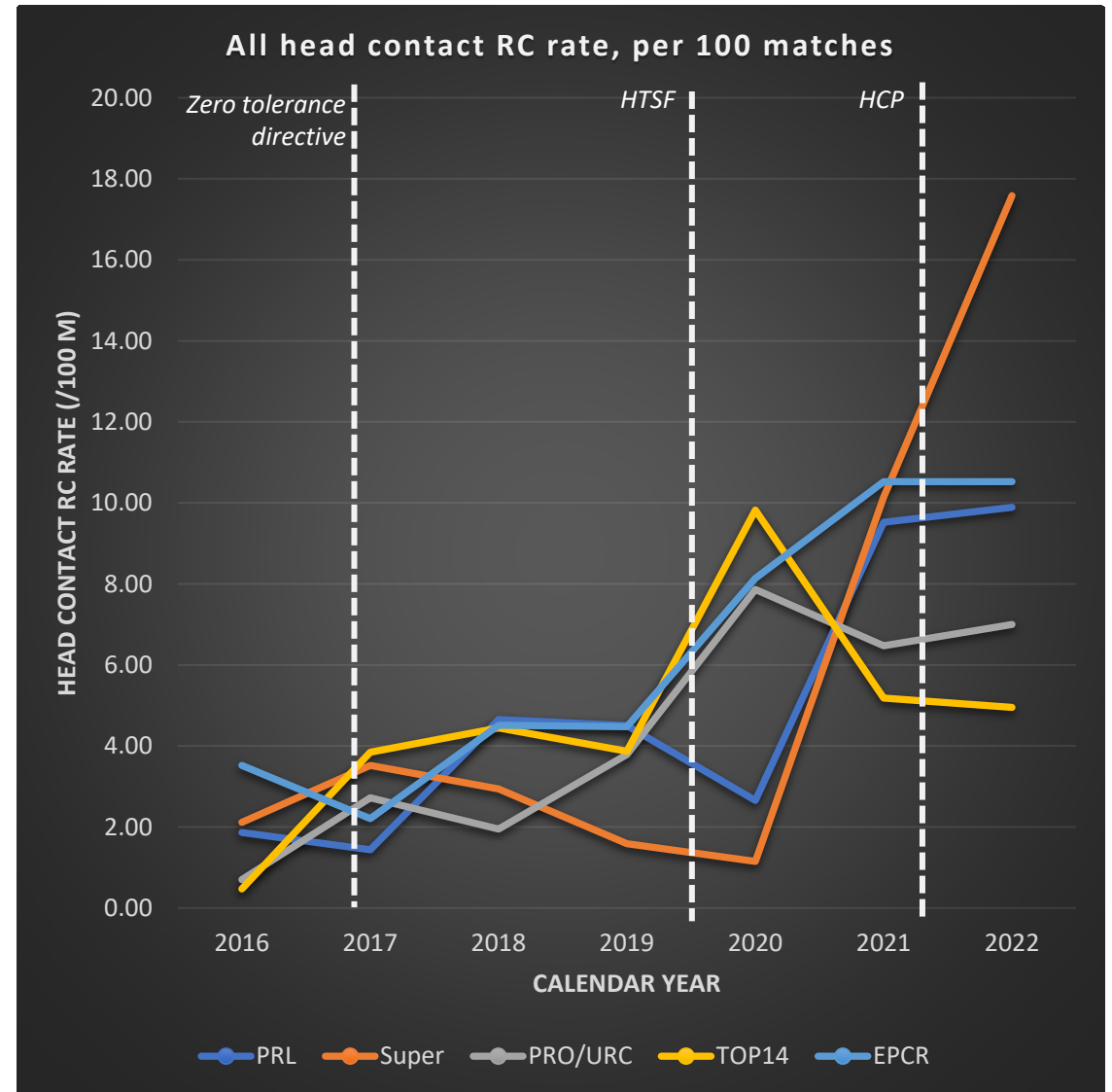
Head contact yellow and red cards

The graphs below show yellow and red cards for both high tackles and dangerous charging incidents

Yellow cards for head contact tackles, per 100 matches

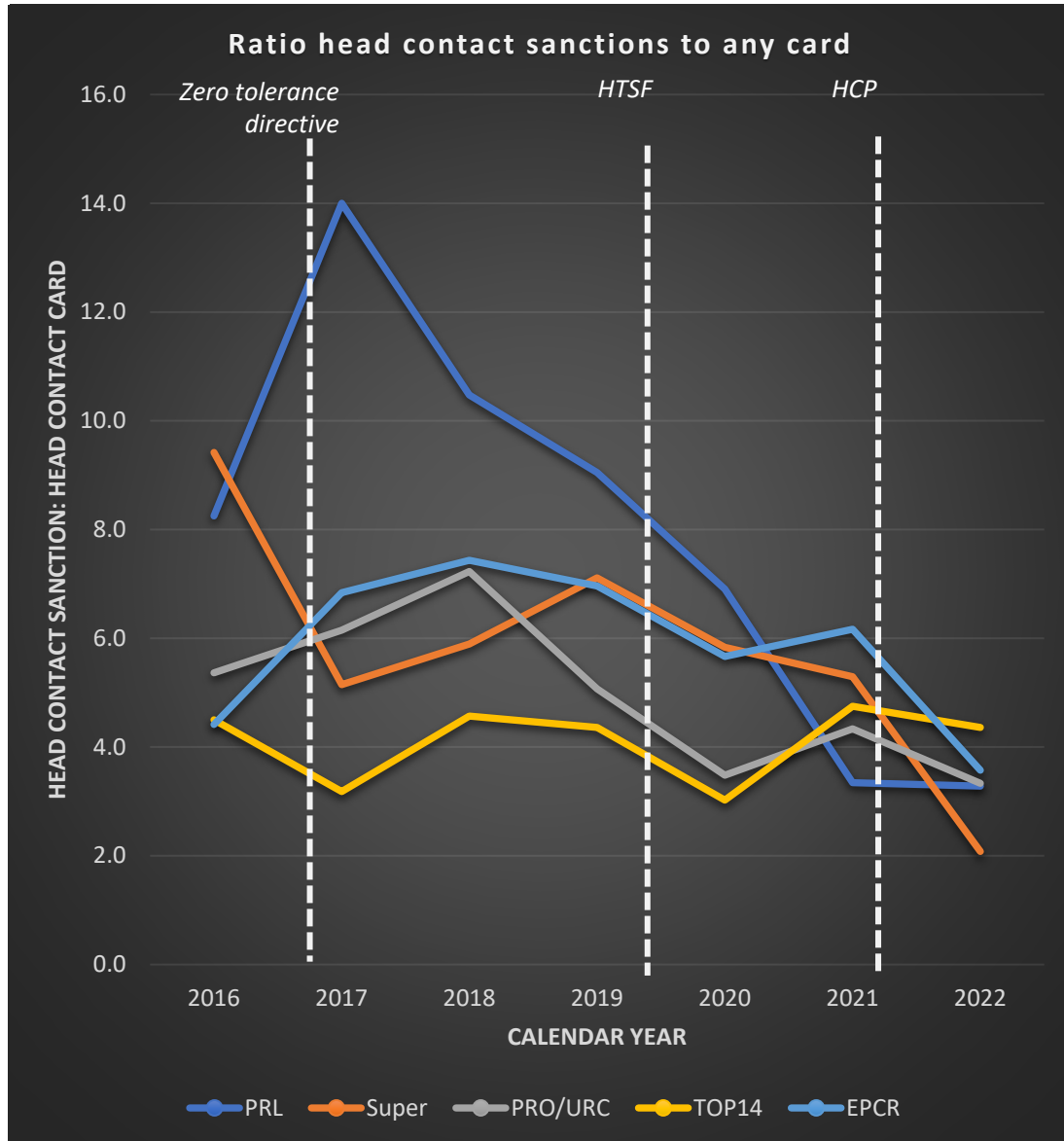


Red cards for head contact tackles, per 100 matches

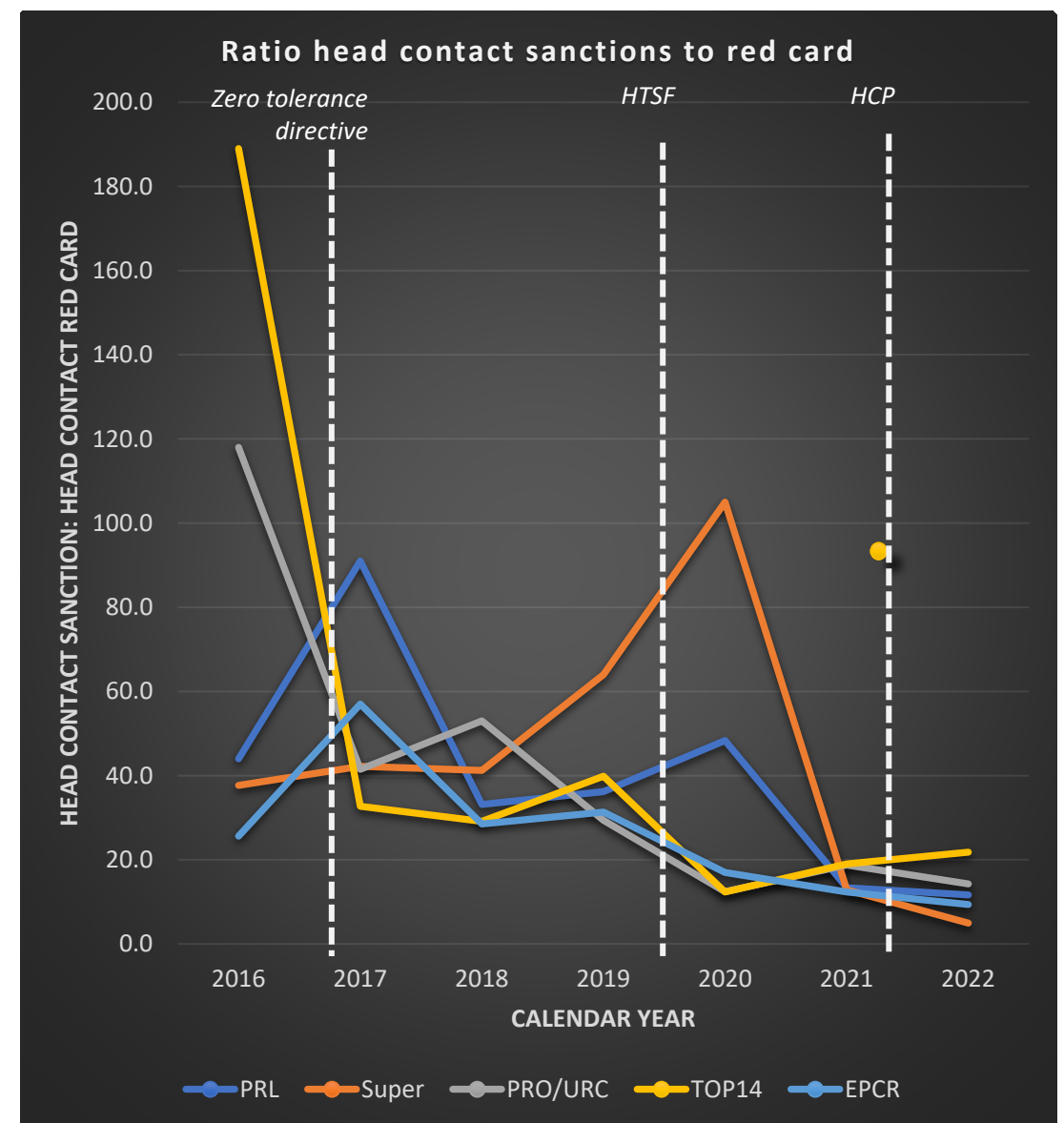


How severely is head contact sanctioned?

How many head contact tackles before any colour card is given?



How many head contact tackles before a red card is given?



High level findings: Global summary

Head contact sanction rate

10.2 sanctions per
10 matches

*Just over 1 head contact
sanction per match*

Head contact red card period

10.2 matches per
red card

*A head contact red card
every 10 matches*

Head contact sanctions per red card

10.4 sanctions per red
card for head contact

*Every 10.4 head contact
incidents is red carded*

Significant increase in the likelihood that red cards will be given:

In 2016

680 head contact
sanctions
8.5 every 10M

13 head contact
red cards
1 every 62 matches

Every 52nd head
contact red carded

In 2018

927 head contact
sanctions
12.7 every 10M

27 head contact
red cards
1 every 27 matches

Every 34th head
contact red carded

In 2020

592 head contact
sanctions
12.2 every 10M

29 head contact
red cards
1 every 17 matches

Every 20th head
contact red carded

In 2022

468 head contact
sanctions
10.2 every 10M

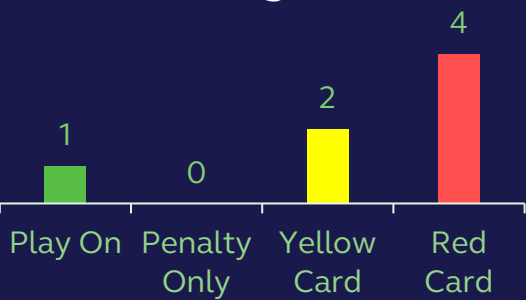
45 head contact
red cards
1 every 10 matches

Every 10th head
contact red carded

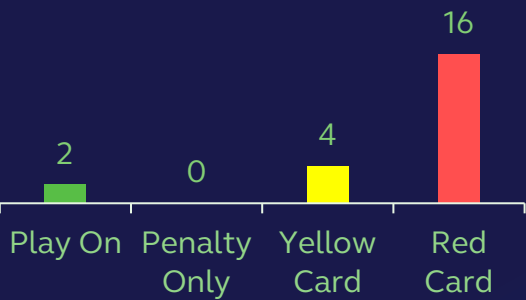
CLIP 24 – REDS v MOANA PASIFIKA



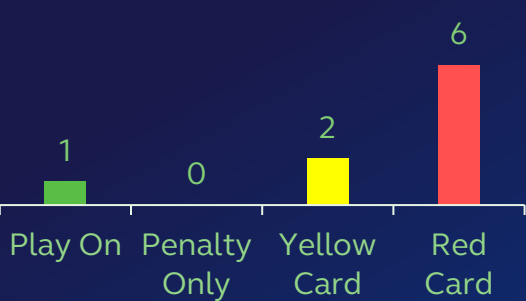
Management



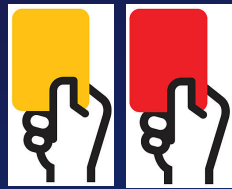
Referees



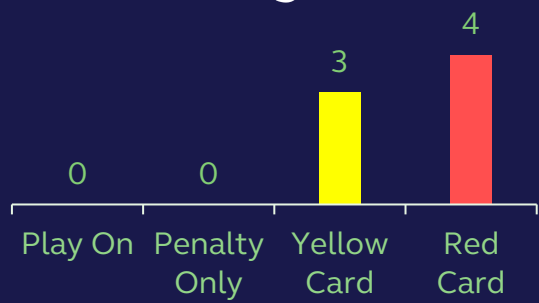
TMOs



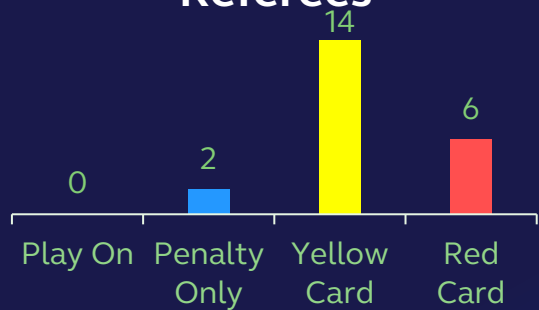
CLIP 1 – CHIEFS v MOANA PASIFIKA



Management



Referees



TMOs



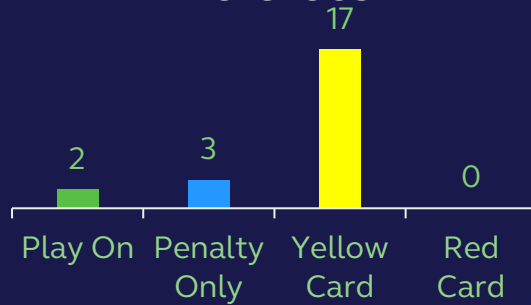
CLIP 6 - LA ROCHELLE v BORDEAUX BEGLES



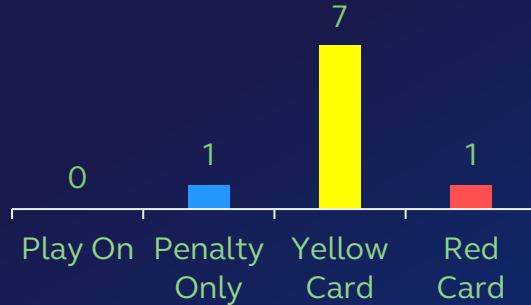
Management



Referees



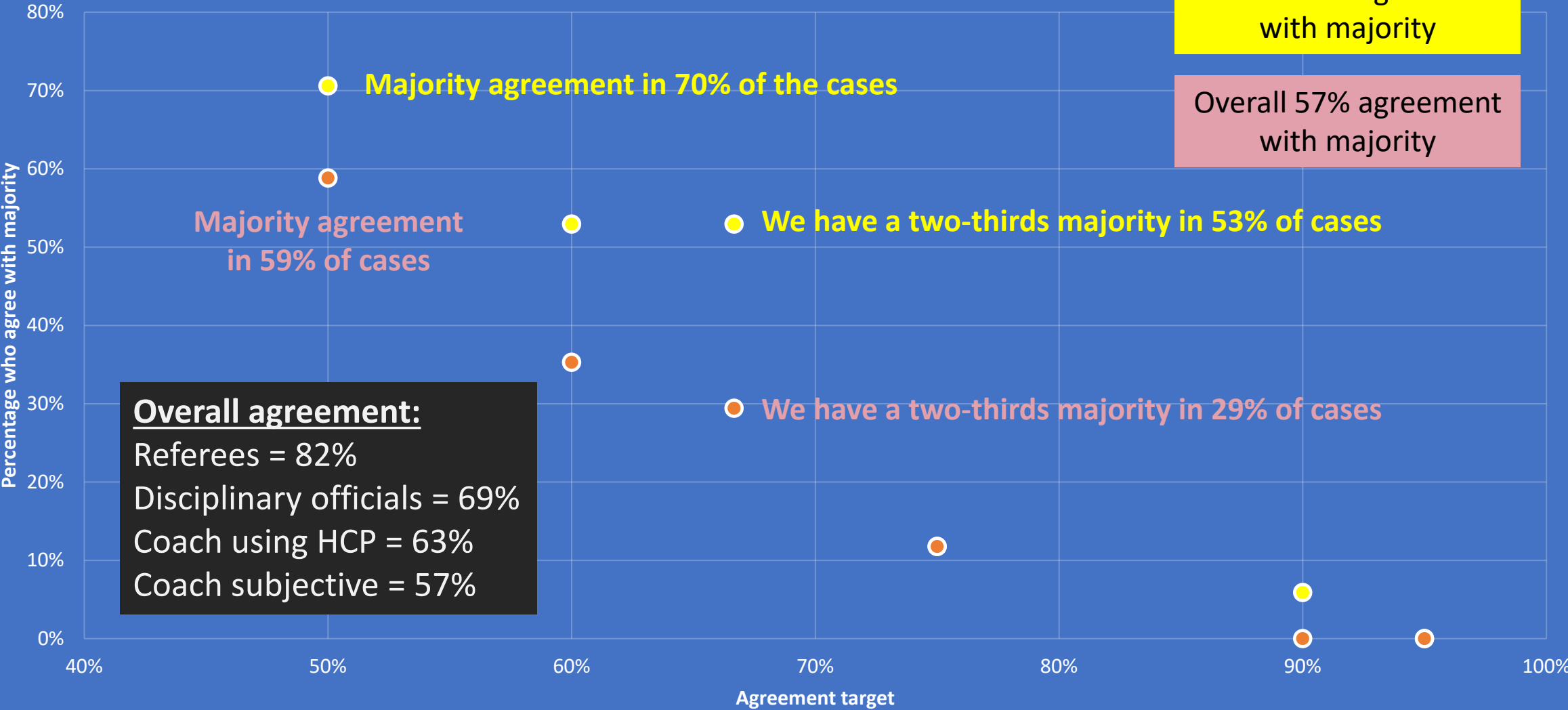
TMOs



HCP performance compared to Coach subjective perception

COACH PERCEPTION AND HCP AGAINST THRESHOLDS

● HCP ● Coach impression

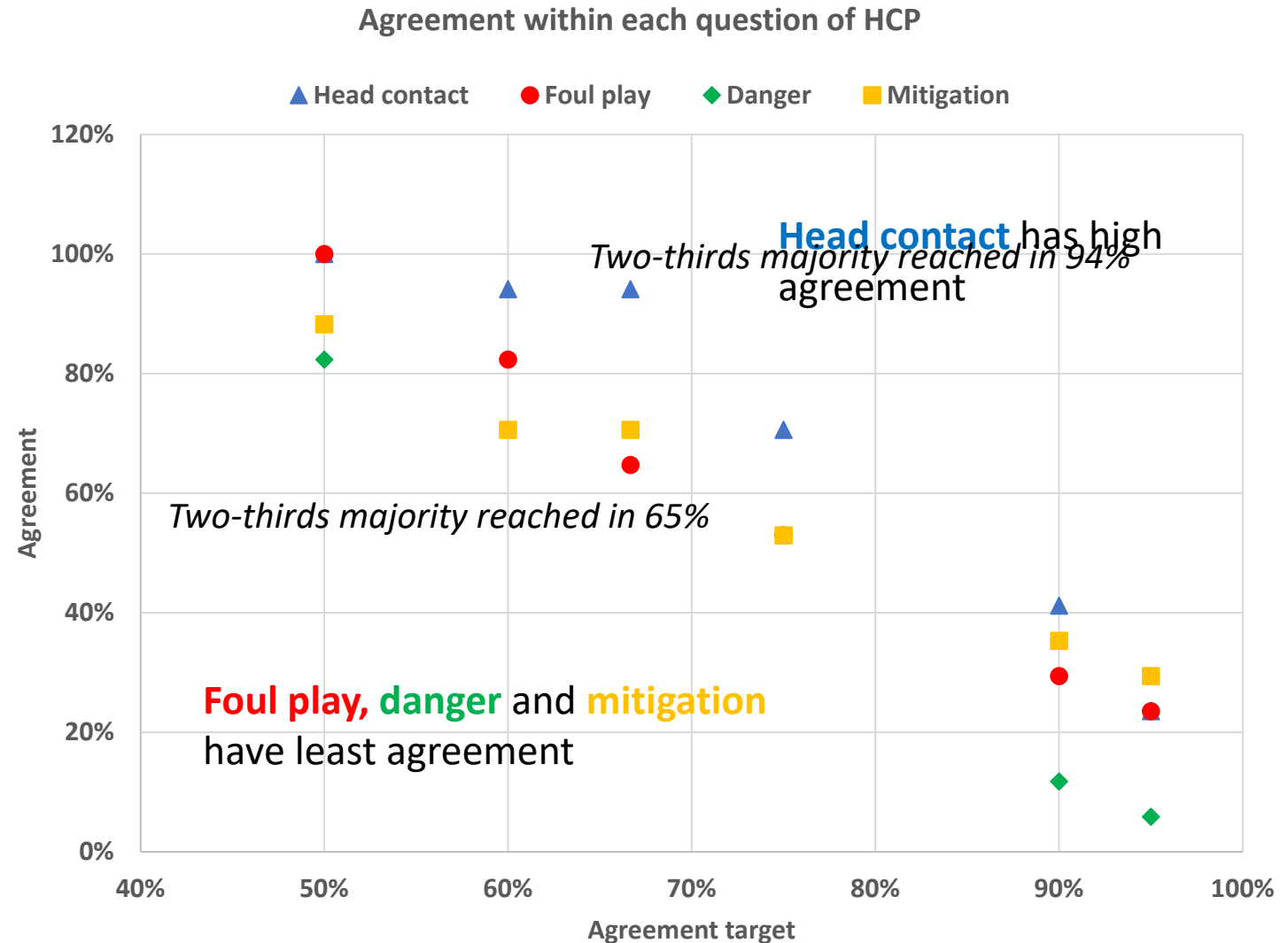


Performance of each element of the HCP

What is the overall agreement?

Head contact	86%
Foul play	76%
Degree of danger	74%
Mitigation	78%

To improve the HCP agreement, we need to improve how different people perceive foul play, degree of danger and mitigation



Lenient or strict? How does coach subjective perception compare to the HCP?

	USING HCP			
SUBJECTIVE	Red card	Yellow card	Penalty	Play on
Red card	25%	5%	1%	7%
Yellow card	0%	3%	9%	22%
Penalty	0%	1%	2%	11%
Play on	0%	0%	0%	13%

Coaches and HCP agree on 44% of final outcomes

When there is disagreement, what is it?

In most of these disagreement cases, the decision reached using the HCP is more lenient than the coach's subjective decision. These are shown in the table below

HCP lenient				
Scenario	Subjective	HCP	Number	% of all
A	Red card	Yellow card	17	5.3%
B	Red card	Penalty	2	0.6%
C	Red card	Play on	23	7.1%
D	Yellow card	Penalty	28	8.7%
E	Yellow card	Play on	70	21.7%
F	Penalty	Play on	37	11.5%
				55.0%

In a very small percentage of cases (< 1%), the coach using the HCP arrives at a harsher sanction their subjective decision. These are shown below

HCP harsher			
Subjective	HCP	Number	% of all
Yellow card	Red card	1	0.3%
Penalty	Red card	0	0.0%
Play on	Red card	0	0.0%
Penalty	Yellow card	2	0.6%
Play on	Yellow card	0	0.0%
Play on	Penalty	0	0.0%
			0.9%

Of interest is that in 40% of the decisions, the HCP gives a play on decision, when the coach subjective perception is red card (7%), yellow card (22%) or penalty (11%)

TOP
14

16:03

PER

3 - 0

LYO

+SPORT

Intermarché

Intermarché



BP POOL A
SCO 12 - 14 AUS
75:18



WORLD RUGBY PRODUCTION
© 2019 WORLD RUGBY LIMITED. ALL RIGHTS RESERVED.

